

ILLUSTRATED PARTS SUPPLEMENT FOR MACHINE STYLES 35800DW-8, DW-9, AND DW-18

(SUPPLEMENT TO CATALOG 95DM)
MANUAL NO. PRT9205
THIRD EDITION COPYRIGHT 1993
BY
UNION SPECIAL CORPORATION
RIGHTS RESERVED IN ALL COUNTRIES
PRINTED IN U.S.A. DECEMBER 1993

APPLICATION OF MANUAL

This manual is a supplement to Catalog 95DM and should be used in conjunction there with.

Only new parts found on Styles 35800DW-8, 35800DW-9, and 35800DW-18 are illustrated. Use catalog 95DM for parts not illustrated or described in this manual. Reference numbers that are inside a bracket or box on the illustrated page and have indented descriptions indicate they are component parts of a complete part or sub-assembly.

For clarity, certain parts are shown in phantom to help locate the new 35800DW-8 and 35800DW-9 parts.

NEEDLES

Each Union Special needle has both a type and size number. The type number denotes the kind of shank, point, groove, finish, and other details. The size number, stamped on the needle shank, denotes the largest diameter of the blade midway between the shank and the eye. Collectively, the type number and size number represent the complete symbol which is given on the label of all needles packed and sold by Union Special.

The standard needle for 35800DW-8, DW-9, and DW-18 is Type 130GS Size 140/054.

Type	Description	Sizes Available	
130GS	Short, double groove, struck groove, ball eye, spotted, government, chromium plated	080/032	090/036
		100/040	110/044
		125/049	140/054
		150/060	

Needle orders will be promptly and accurately filled when a sample needle, an empty package or the type and size number of the needle is forwarded. The type and size number of the needle is located on the needle package label. A complete order would read as follows: "1000 needles, Type 113GS, Size 100/040".

REPAIR PARTS

Implementation of preventative maintenance procedures can bring significant improvements in operator productivity by avoiding costly equipment breakdowns. Wherever it becomes necessary to make repairs or replace parts on your machine, be sure to insist on genuine UNION SPECIAL repair parts. These parts are designed specifically for your machine and manufactured with utmost precision to assure long lasting service.

IDENTIFYING PARTS

Where construction permits, each part is stamped with its part number. On some of the similar parts and on those where construction does not permit, an identification letter is stamped into the part to distinguish it from similar ones.

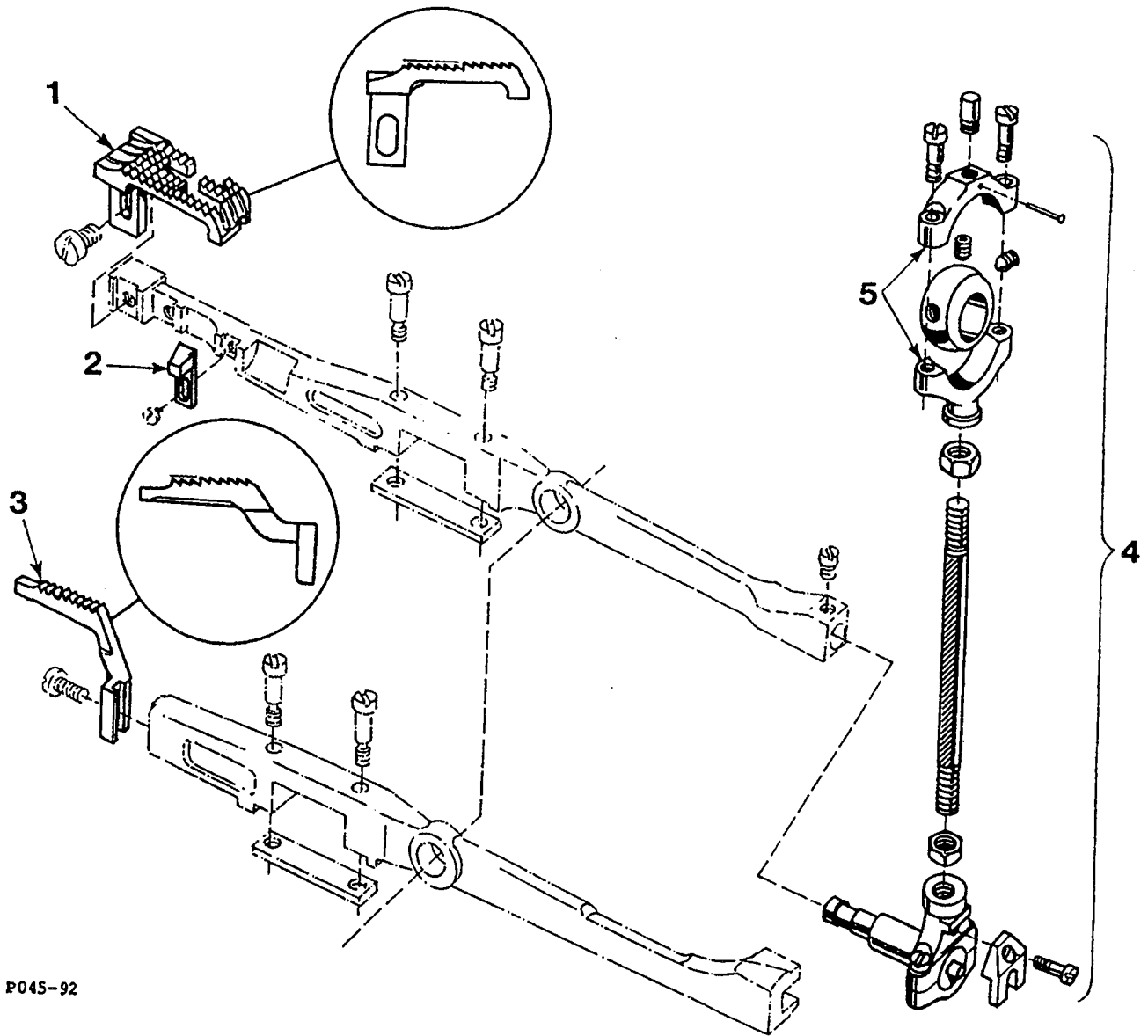
Part numbers represent the same part, regardless of which manual they appear. On all orders please include part number, name and style of machine for which the part was ordered.

TERMS

Prices are strictly net cash and are subject to change without notice. All shipments are forwarded F.O.B. shipping point. Parcel Post shipments are insured unless otherwise directed. A charge is made to cover postage and insurance.

OILING

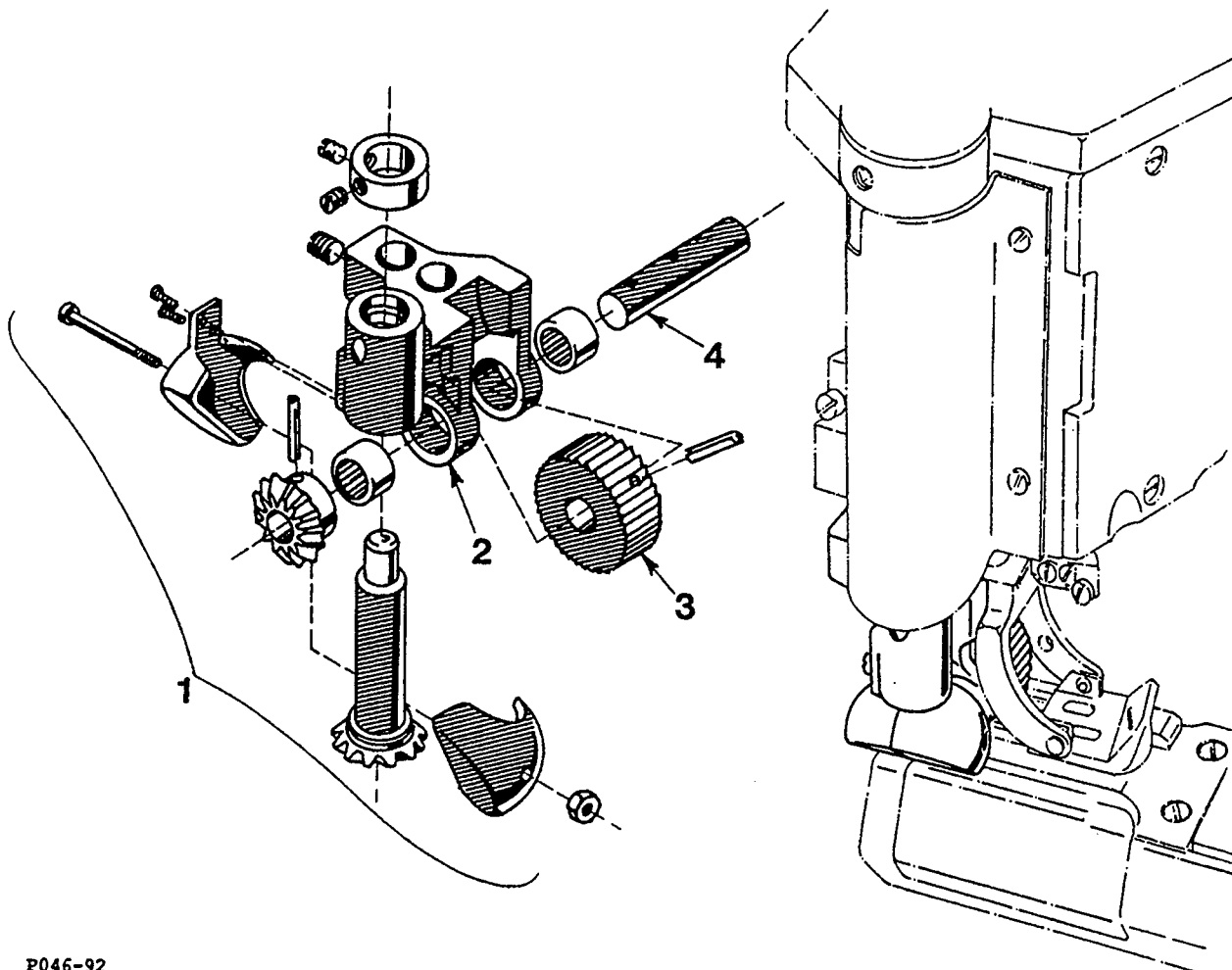
The oil has been drained from the machine before shipping and the reservoir must be filled before beginning to operate. Use straight mineral oil, Saybolt viscosity of 90 to 125 seconds at 100° Fahrenheit.



P045-92

HIGH LIFT ECCENTRIC & FEED DOGS

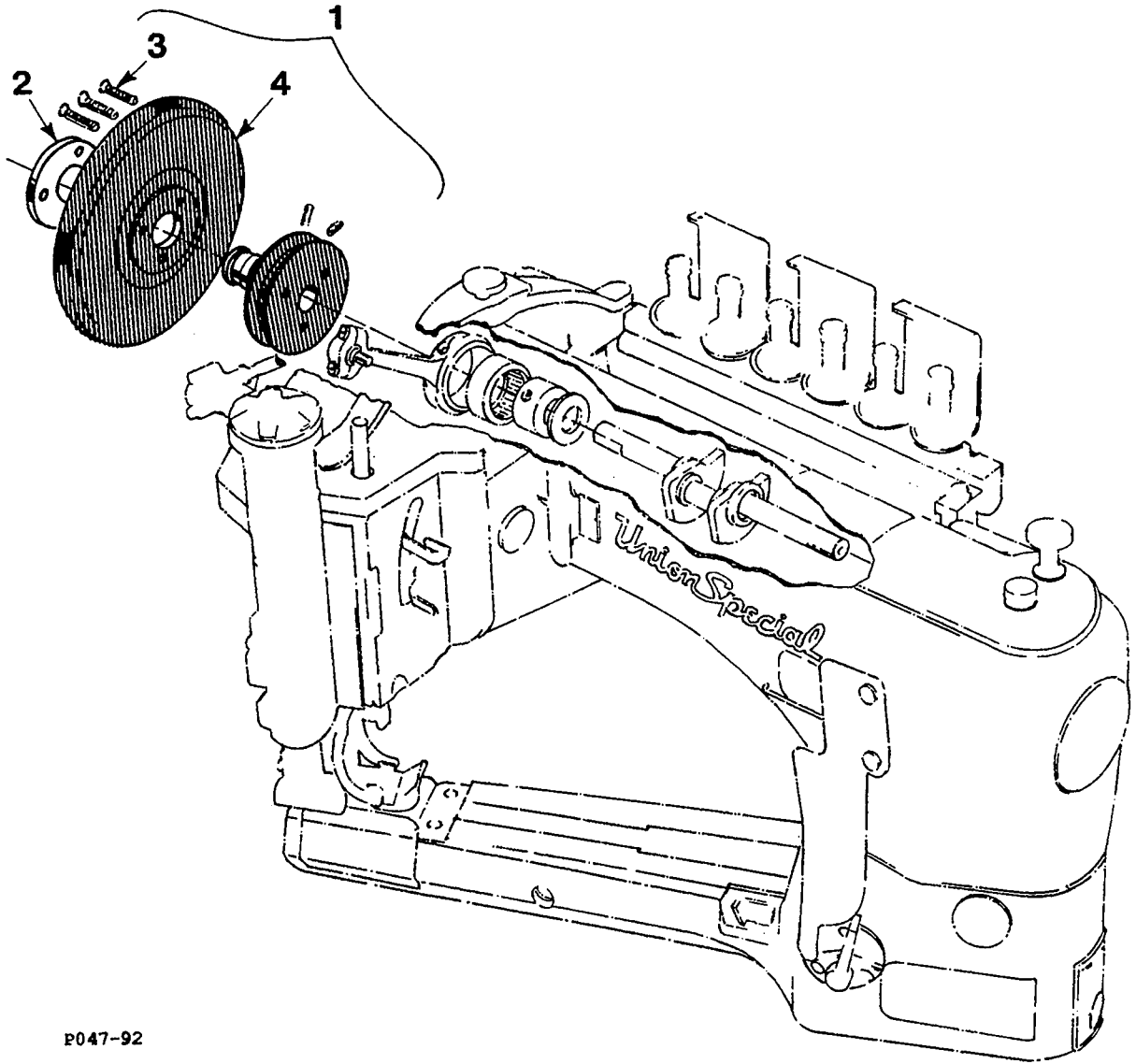
Ref. No.	Part No.	Description	Ami. Req.
1.	35805DW-18	Main Feed Dog, for Style 35800DW-18	1
	- 35805DX	Main Feed Dog, marked "WF", for Styles 35800DW-8, DW-9	1
2.	35834AC	Main Feed Dog Support	1
3.	35826DX	Differential Feed Dog, for all Styles	1
4.	29478EB	Feed Lift Eccentric Assembly	1
5.	29103U	Feed Lift Eccentric Ball Joint Assembly	1



P046-92

FEED ROLLER ASSEMBLY

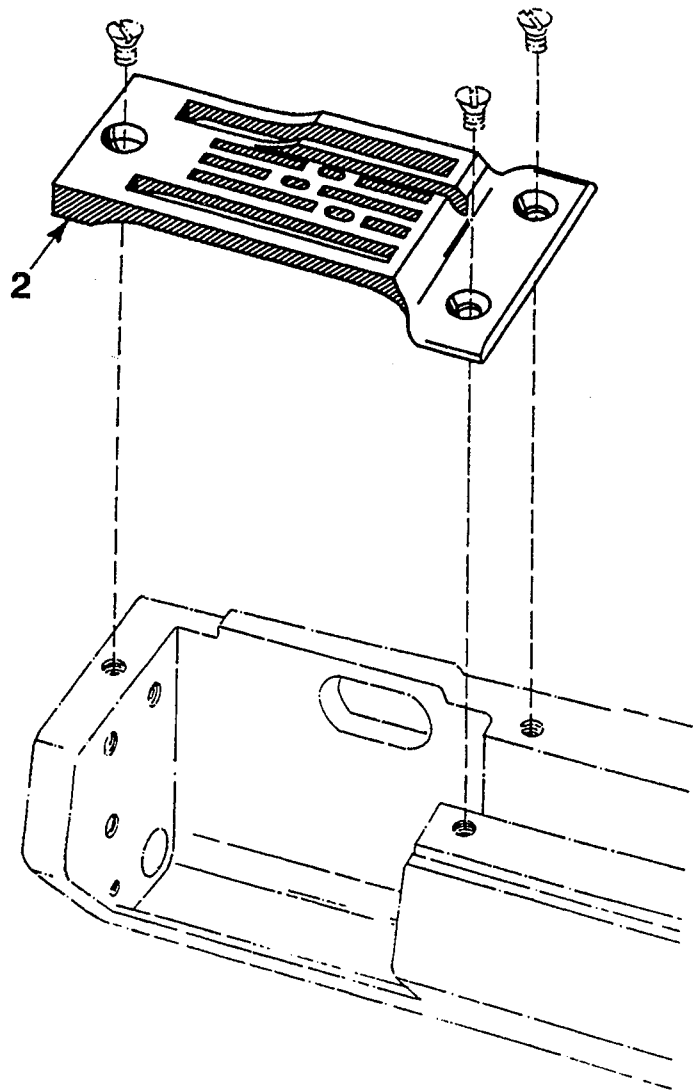
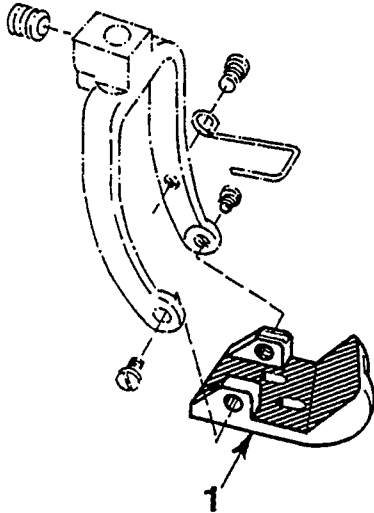
Ref. No.	Part No.	Description	Amt. Req.
1.	29478EA	Feed Roller Assembly	1
2.	35873AE	Feed Roller Frame	1
3.	35826V	Feed Roller	1
4.	35873AF	Feed Roller Shaft	1



P047-92

PULLEY ASSEMBLY

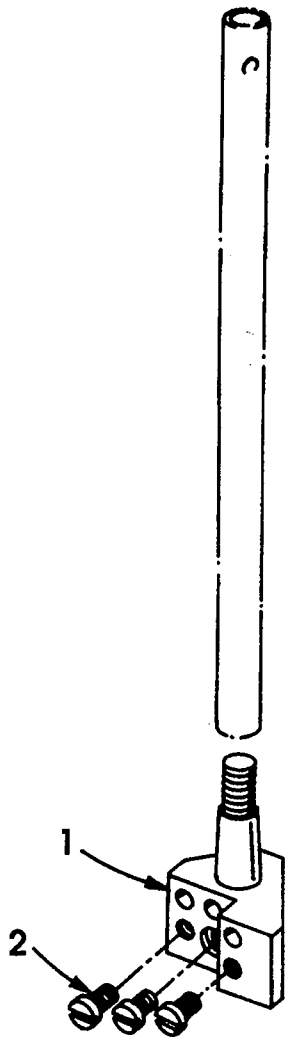
Ref. No.	Part No.	Description	Amt. Req.
1.	35821S	Pulley Assembly	1
2.	61321L	Washer, hub	1
3.	22574	Screw, for handwheel	3
4.	61321J	Handwheel	1



P049-92

THROAT PLATE & PRESSER FOOT

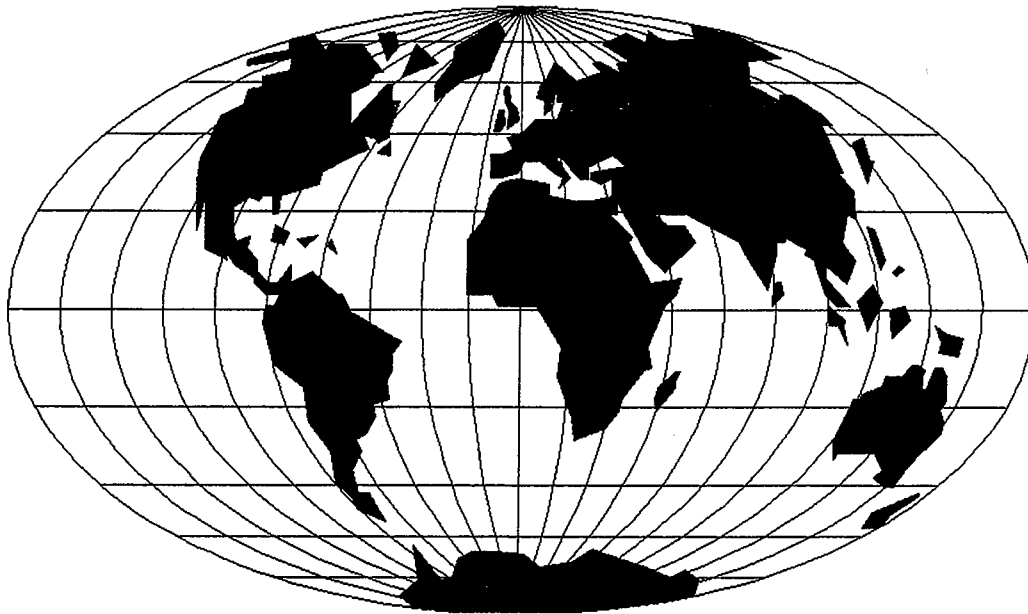
Ref. No.	Part No.	Description	Amt. Req.
1.	35820DW-18	Presser Foot Bottom, for Style 35800DW-18	1
-	35830DX-8	Presser Foot Bottom, for Style 35800DW-8	1
-	35830DX-9	Presser Foot Bottom, for Style 35800DW-9	1
2.	35824DW-18	Throat Plate, for Style 35800DW-18	1
-	35824DX-8	Throat Plate, for Style 35800DW-8	1
-	35824DX-9	Throat Plate, for Style 35800DW-9	1



P101-93

NEEDLE BAR HEAD

Ref. No.	Part No.	Description	Amf. Req.
1.	35818BY-8	Needle Bar Head, marked "V-8", for 35800DW-8	1
-	35818BY-9	Needle Bar Head, marked "V-9", for Styles 35800DW-9, DW-18	1
2.	605	Screw	3



WORLDWIDE SALES AND SERVICE

Union Special Corporation maintains sales and service facilities throughout the world. These offices will aid you in the selection of the right sewing equipment for your particular operation. Union Special Corporation representatives and service technicians are factory trained and are able to serve your needs promptly and efficiently. Whatever your location, there is a qualified representative to serve you.

Corporate Office: One Union Special Plaza
Huntley, IL 60142
Phone: 847•669•5101
Fax: 847•669•1096

European Distribution Center: Union Special GmbH
Raiffeisenstrasse 3
D-71696 Möglingen, Germany
Tel: 49•07141•247•0
Fax: 49•7141•247•100

Brussels, Belgium
Charlotte, N.C.
El Paso, TX
Hong Kong, China
Huntley, IL
Leicester, England
Lille, France
Miami, FL
Milan, Italy
Möglingen, Germany
Montreal, Quebec
Osaka, Japan
Santa Fe Springs, CA

Other Representatives throughout all parts of the world.



Union Special
INDUSTRIAL SEWING EQUIPMENT